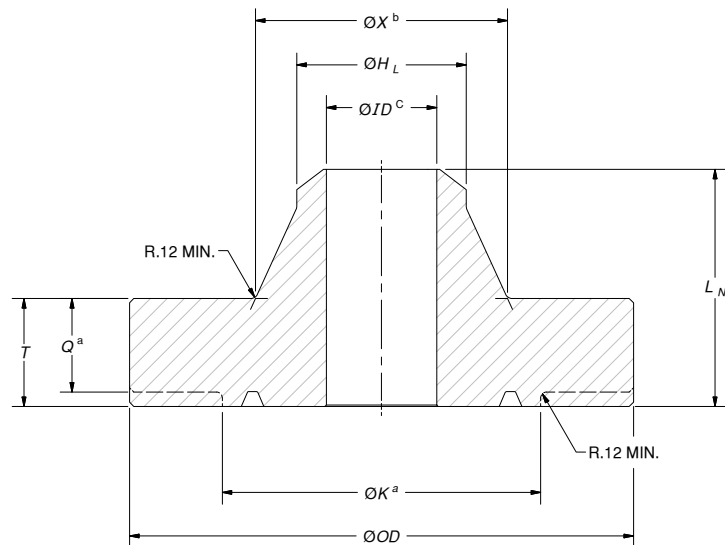
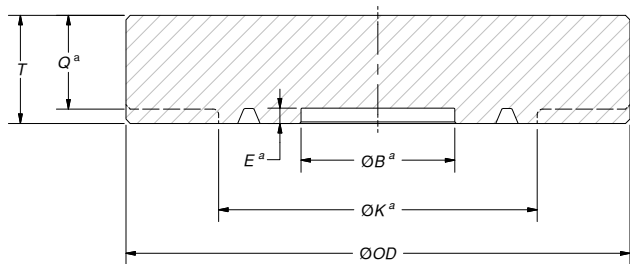


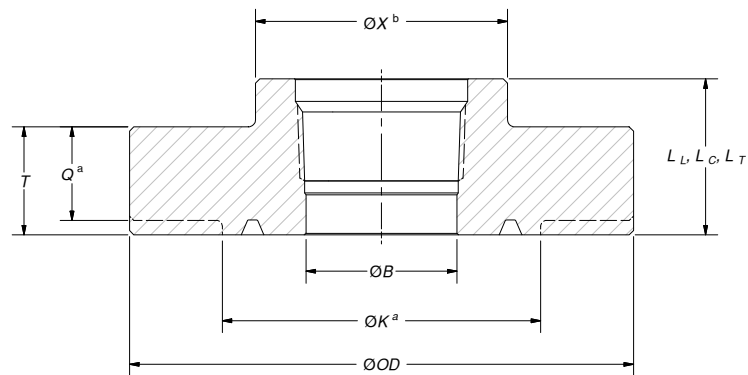
FLANGE FACE



SECTION A-A
WELD NECK FLANGE



SECTION A-A
BLIND FLANGE



SECTION A-A
THREADED FLANGE

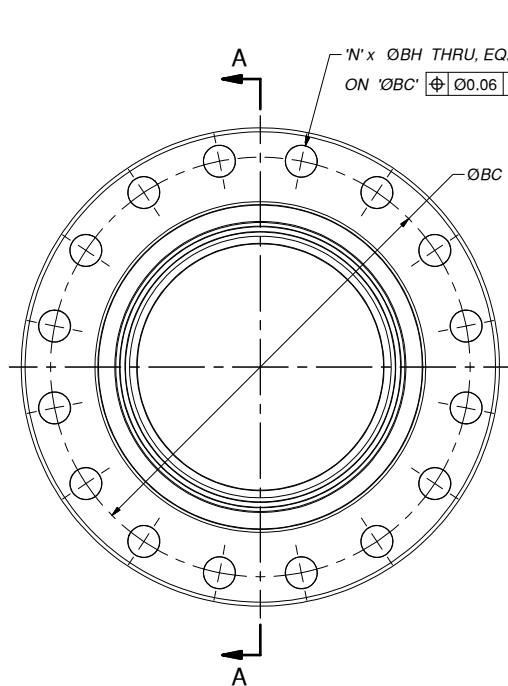
NOTES:

- a RAISED FACE K AND COUNTERBORE E ARE OPTIONAL FEATURES.
- b DIAMETER X IS A REFERENCE DIMENSION.
- c TO BE SPECIFIED BY PURCHASER.

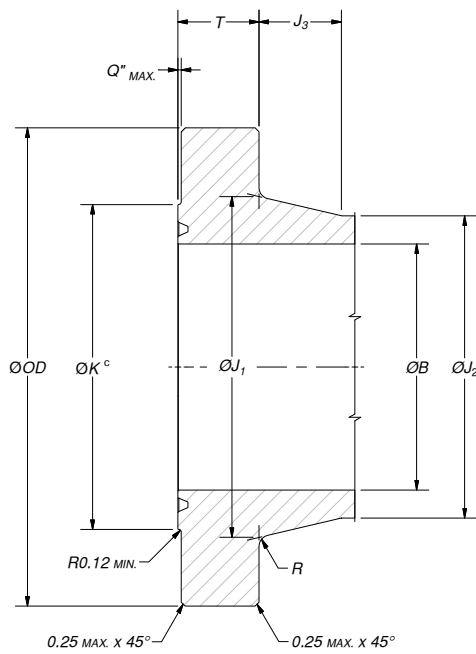
DIMENSIONS IN INCHES

TYPE 6B FLANGES FOR 3,000 PSI

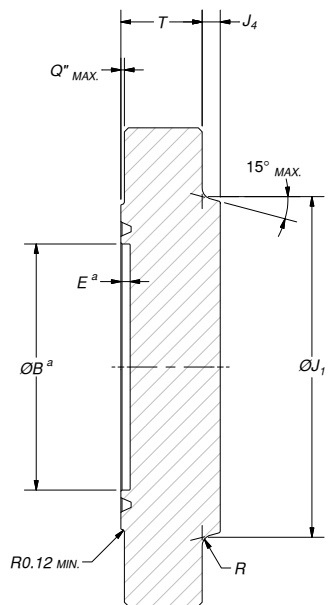
NOMINAL SIZE OF FLANGE	MAXIMUM BORE	OUTSIDE DIA. OF FLANGE	DIA. OF RAISED FACE	TOTAL THICKNESS OF FLANGE	BASIC THICKNESS OF FLANGE	DIA. OF HUB	COUNTER BORE DEPTH	DIA. OF BOLT CIRCLE	NUMBER OF HOLES	BOLT SIZE AND TPI	DIA. OF BOLT HOLES	MIN. HUB LENGTH, LINE PIPE FLANGE	MIN. HUB LENGTH, CASING FLANGE	MIN. HUB LENGTH, TUBING FLANGE	OAL. WELD NECK FLANGE	RING GROOVE No.
	'B'	'OD'	'K'	'T'	'Q'	'X'	'E'	'BC'	N'		'BH'	LL	LC	LT	LN	
2-1/16	2.09	8.50	4.88	1.81	1.50	4.12	0.31	6.50	8	7/8-9	1.00	2.56	--	2.56	4.31	R-24
2-9/16	2.59	9.62	5.38	1.94	1.62	4.88	0.31	7.50	8	1-8	1.12	2.81	--	2.81	4.44	R-27
3-1/8	3.22	9.50	6.12	1.81	1.50	5.00	0.31	7.50	8	7/8-9	1.00	2.44	--	2.94	4.31	R-31
4-1/16	4.28	11.50	7.12	2.06	1.75	6.25	0.31	9.25	8	1 1/8-8	1.25	3.06	3.50	3.5	4.81	R-37
5-1/8	5.16	13.75	8.50	2.31	2.00	7.50	0.31	11.00	8	1 1/4-8	1.38	3.44	4.00	--	5.31	R-41
7-1/16	7.16	15.00	9.50	2.50	2.19	9.25	0.31	12.50	12	1 1/8-8	1.25	3.69	4.50	--	5.81	R-45
9	9.03	18.50	12.12	2.81	2.50	11.75	0.31	15.50	12	1 3/8-8	1.50	4.31	5.00	--	6.69	R-49
11	11.03	21.50	14.25	3.06	2.75	14.50	0.31	18.50	20	1 3/8-8	1.50	4.56	5.25	--	7.59	R-53
13-5/8	13.66	24.00	16.50	3.44	3.12	16.50	0.31	21.00	20	1 3/8-8	1.50	4.94	4.94	--	--	R-57
16-3/4	16.78	27.75	20.62	3.94	3.50	20.00	0.44	24.25	20	1 5/8-8	1.75	5.06	5.69	--	--	R-66
20-3/4	20.78	33.75	25.50	4.75	4.25	24.50	0.50	29.50	20	2-8	2.12	6.75	6.75	--	--	R-74



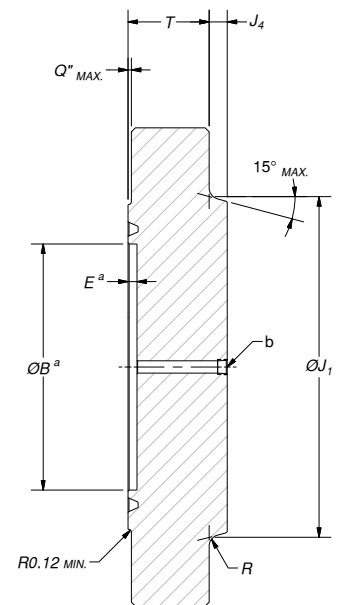
FLANGE FACE



SECTION A-A
INTEGRAL FLANGE



BLIND FLANGE



TEST FLANGE

NOTES:

- a OPTIONAL FEATURE.
- b TEST CONNECTION SHALL BE 1/2" NPT OR 9/16" HPAC.
- c RAISED FACE MAY BE OMITTED ON STUDDED CONNECTORS, BUT THICKNESS 'T' SHALL STILL APPLY.

DIMENSIONS IN INCHES

TYPE 6BX LARGE-BORE FLANGES FOR 2000 PSI, 3000 PSI, & 5000 PSI																
NOMINAL SIZE OF FLANGE	MAXIMUM BORE	OUTSIDE DIA. OF FLANGE	RAISED FACE DEPTH (MAX.)	DIA. OF RAISED FACE	TOTAL THICKNESS OF FLANGE	LARGE HUB DIA.	SMALL DIA. OF HUB (MIN.)	LENGTH OF HUB (MIN.)	HUB HEIGHT (MIN.)	BLIND FLANGE, MAX. COUNTERBORE DEPTH	RADIUS OF HUB	DIA. OF BOLT CIRCLE	NUMBER OF HOLES	BOLT SIZE AND TPI	DIA. OF BOLT HOLES	RING GROOVE No.
	B	OD	Q''	K	T	J1	J2	J3	J4	E	R	BC	N		BH	
2,000 PSI	-----	-----	-----	-----	-----	-----	-----	-----	-----	-----	-----	-----	-----	-----	-----	-----
26-3/4	26.78	41.00	0.25	31.69	4.97	32.91	29.25	7.31	0.38	0.844	0.62	37.50	20	1 3/4-8	1.88	BX-167
30	30.03	44.19	0.25	35.75	5.28	36.69	32.80	7.75	0.69	0.906	0.62	40.94	32	1 5/8-8	1.75	BX-303
3,000 PSI	-----	-----	-----	-----	-----	-----	-----	-----	-----	-----	-----	-----	-----	-----	-----	-----
26-3/4	26.78	43.38	0.25	32.75	6.34	34.25	30.56	7.31	0	0.844	0.62	39.38	24	2-8	2.12	BX-168
30	30.03	46.68	0.25	36.31	6.58	38.19	34.30	7.75	0.5	0.906	0.62	42.94	32	1 7/8-8	2.00	BX-303
5,000 PSI	-----	-----	-----	-----	-----	-----	-----	-----	-----	-----	-----	-----	-----	-----	-----	-----
13-5/8	13.66	26.50	0.25	18.00	4.44	18.94	16.69	4.50	0.94	0.562	0.62	23.25	16	1 5/8-8	1.75	BX-160
16-3/4	16.78	30.38	0.25	21.06	5.12	21.88	20.75	3.00	0.69	0.328	0.75	26.62	16	1 7/8-8	2.00	BX-162
18-3/4	18.78	35.62	0.25	24.69	6.53	26.56	23.56	6.00	0.75	0.719	0.62	31.62	20	2-8	2.12	BX-163
21-1/4	21.28	39.00	0.25	27.62	7.12	29.88	26.75	6.50	0.88	0.750	0.69	34.88	24	2-8	2.12	BX-165